

Frictionless RF-door

This pneumatic RF-door impresses with its unique operating comfort. This is made possible by opening and closing the door without resistance. The RF attenuation shielding is ensured due to a fine-meshed seal net. All-round foam seals supply an effective sound reduction. You can expect a nearly maintenance-free door, since door contact fingers are no longer necessary.



Features

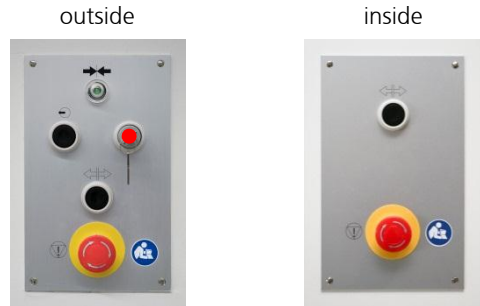
- ☑ Resistance-free opening and closing
- ☑ Door contact fingers no longer necessary
- ☑ Operating comfort due to smooth handling
- ☑ Automatic door sealing (securing)
- ☑ Release of the door via button push
- ☑ Excellent RF attenuation shielding (≥ 100 dB @ 10MHz – 150MHz)
- ☑ High sound reduction index $R_w = 43$ dB
- ☑ IMEDCO works quality management certified according to ISO 9001:2008







Basic construction

Pneumatic frictionless door with non magnetic hardware, including frame, door leaf and all pneumatic controls



Control Switches



-  Key-operated switch
-  Open door
-  Ready (indicator green)
-  Reset
-  Emergency open
-  Observe instruction manual

Features

- Dimension: W 1200 x H 2100 mm
- Finished in white decorative laminate on both faces
- Instruction manual and initial set-up by trained personnel

Pneumatic control box

- The control box is located within the false ceiling void inside the RF-cage (see illustration on the right)

Conditions of delivery and installation

- Delivered and installed together with the IMEDCO RF enclosure
- Delivery time: 6 weeks

Specification for compressed air

- Operating pressure: 8 bar
- Working pressure: 6 bar
- FAD @ 8 bar 34l / min.
- Dry (no water or oil) and dust free compressed air according to ISO 8573-1, class 4
- Compressed air has to be supplied locally and must be ready at the time of the RF-shield installation

